

FALL/WINTER 2017

UCSF Oncology Connection



FEATURED PROGRAM

Center for Neuroendocrine Tumors

UCSF Ron Conway Family Gateway Medical Building
1825 Fourth St., Fourth Floor, San Francisco, CA 94158

Phone: 415-476-2212 **Fax:** 415-353-9931

Email: neuroendocrine@ucsf.edu **Website:** neuroendocrine.ucsf.edu

Center for Neuroendocrine Tumors

Offering comprehensive evaluations and personalized treatment plans, the Center for Neuroendocrine Tumors includes a multidisciplinary team that enables patients with any type of neuroendocrine tumor to receive expert, team-based care.

► INSIDE THIS ISSUE A Central Home for Patients with Neuroendocrine Tumors



www.cancer.ucsf.edu

Non-Profit Org.
U.S. POSTAGE
PAID
San Francisco, CA
Permit No. 8285

UCSF Helen Diller Family
Comprehensive Cancer Center
UCSF Box 0940
1600 Divisadero Street
San Francisco, CA 94143

Physician Resources

Physician Liaison Service

Phone: 800-444-2559

Fax: 415-353-4395

Email: referral.center@ucsfmedctr.org

Contact the Physician Liaison Service for help in making a referral, assistance in obtaining follow-up information or to address other questions or concerns.

Transfer Center

Phone: 415-353-9166

Fax: 415-353-9172

The Transfer Center is staffed 24 hours daily to coordinate the transfer of patients to UCSF Medical Center. The center provides quick access to our doctors and other members of our team. We evaluate the needs of each patient to ensure that appropriate care is provided. The center can also facilitate your patient's return transfer.

Ida & Joseph Friend Cancer Resource Center

Phone: 415-885-3693

Fax: 415-885-3701

Website: cancer.ucsf.edu/crc

The Cancer Resource Center (CRC) provides patients and their loved ones with information, classes, support groups and referrals to community resources. Most CRC programs are free.

Continuing Medical Education

Phone: 415-476-4251

Fax: 415-476-0318

Website: www.cme.ucsf.edu

UC San Francisco's Office of Continuing Medical Education offers more than 200 courses each year for physicians and allied health care professionals to improve their abilities as practitioners.

Information for Health Professionals

Website: www.ucsfhealth.org/healthprofessionals

Our website for health professionals provides information regarding referrals, transfers, billing, consultations, insurance issues and more.

Clinical Trials

Phone: 877-827-3222

Email: communications@cc.ucsf.edu

Clinical trials database: cancer.ucsf.edu/trials

As home to one of the nation's largest cancer clinical trial programs, we offer trials focusing on treatment, prevention, survivorship and quality of life. To subscribe to a monthly email listing of open trials, send your name and email address to clinicaltriallist@ucsfmedctr.org.

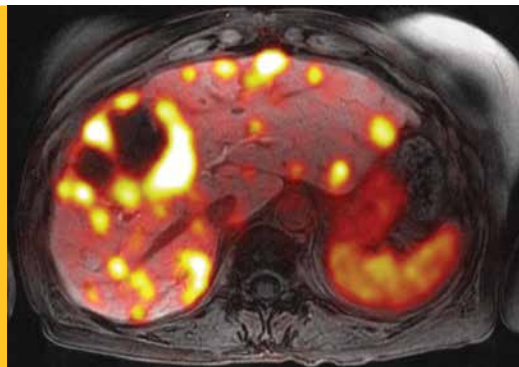
FALL/WINTER 2017

UCSF Oncology Connection



Center director Emily Bergsland, MD, and nuclear medicine expert Thomas Hope, MD

Patient with metastatic small bowel neuroendocrine tumor to the liver is imaged using simultaneous somatostatin receptor PET/MRI.



A Central Home for Patients with Neuroendocrine Tumors

Though considered relatively rare, neuroendocrine tumors (NETs) arise in nearly any organ site and are the second most common gastrointestinal malignancy seen in clinical practice.

This paradox reflects a marked increase in the number of new NET cases diagnosed each year and the fact that the disease often follows an indolent course, with most patients living many years after diagnosis. Nevertheless, liver metastases are common, and the presence of unusual syndromes from tumor-associated hormone production in some patients can generate complex clinical and quality-of-life challenges.

"That's why we created the UCSF Center for Neuroendocrine Tumors," says oncologist Emily Bergsland, MD, who directs the center and sees about 150 new patients with the condition each year.

Comprehensive, Personalized Consultation and Treatment

The center offers comprehensive evaluations and personalized treatment plans, often in a consultative role for referring oncologists – as well as access to clinical trials.

"Our team includes surgeons, oncologists, interventional radiologists, nuclear medicine experts, cardiologists, endocrinologists, genetic counselors, nutritionists and symptom management specialists. This enables patients with any type of NET to receive expert, team-based care," says nuclear medicine expert Thomas Hope, MD.

That care can include:

- Surgical resection
- Ablation
- Liver-directed intra-arterial therapy
- Hormone therapy
- Oral targeted therapy (e.g., everolimus, sunitinib)
- Chemotherapy
- Peptide receptor radionuclide therapy (PRRT)

Some treatments are available in the community, but others are available only at a specialty center like UCSF, either because of the need for advanced technology or because they are available only in the context of clinical research. To facilitate care, the UCSF center hosts a bimonthly Neuroendocrine Tumor Board, an expanding number of NET specialty clinics and a NET patient support group.

Treatment decisions for NETs are complex, owing to variations in site of origin, extent of organ involvement, hormone production and tumor biology. "Proper treatment choices – including when to start, how to sequence and how to minimize long-term toxicity – rely on experience, as well as the availability of multidisciplinary input and advanced imaging," says Bergsland.

"We look at symptoms and track pace of growth through serial imaging to help determine the best course of treatment," says Hope.

PRRT Trials and Beyond

PRRT is a promising new approach that is expected to gain Food and Drug Administration (FDA) approval soon, and UCSF is a clinical trial site testing the use of lutetium-labeled peptide therapy (¹⁷⁷Lu-Dotatate). The center also possesses expertise in nuclear imaging that predicts which patients will most likely benefit from PRRT. Future research will study combination therapy and alternative routes of administration aimed at optimizing PRRT.

The center is also very interested in advancing the care of the small percentage of patients with poorly differentiated, highly aggressive cancers known as neuroendocrine carcinomas (NECs). "We are actively engaged in basic and clinical research in this area, working across disease groups," says Bergsland.

To that end, center members actively collaborate with the UCSF Helen Diller Family Comprehensive Cancer Center's Early Phase Clinical Trials Unit, the UCSF Cancer Immunotherapy Program and the UCSF Hereditary Cancer Clinic. Providers also have access to the UCSF500 Cancer Gene Panel and the associated Molecular Tumor Board.

For more information on the UCSF Center for Neuroendocrine Tumors, call **415-476-2212**, email neuroendocrine@ucsf.edu or visit neuroendocrine.ucsf.edu.

ADDITIONAL SERVICES

■ **UCSF Osher Center for Integrative Medicine**
415-353-7700
www.ucsfhealth.org/ocim

■ **Cancer Genetics and Prevention Program**
415-885-7779
www.ucsfhealth.org/cancerriskprogram

■ **Symptom Management Service**
415-885-7671 (415-885-SMS1)
www.cancer.ucsf.edu/sms

UCSF Helen Diller Family
Comprehensive
Cancer Center